



LDE(X) and its constituent parts (except some items located in the UI\Ermintrude2\Utils folder) are licensed according to the terms of the GNU Public License (Version 2).

LDE(X) is powered by :



## Table of Contents

1	GNU GENERAL PUBLIC LICENSE.....	3
2	Foreword.....	6
3	Requirements.....	7
	3.1 Hardware.....	7
	3.2 Software.....	7
4	Welcome.....	8
5	Getting Started with Bunny.....	9
6	Technical Annex.....	13
	6.1 Schemes.....	14
	6.1.1 Scheme Definitions.....	14
	6.1.1.1 The Structure.....	14
7	FAQs.....	16
8	Known Issues.....	17

# 1 GNU GENERAL PUBLIC LICENSE

Version 2, June 1991

Copyright (C) 1989, 1991 Free Software Foundation, Inc.  
59 Temple Place, Suite 330, Boston, MA 02111-1307 USA

Everyone is permitted to copy and distribute verbatim copies of this license document, but changing it is not allowed.

## Preamble

The licenses for most software are designed to take away your freedom to share and change it. By contrast, the GNU General Public License is intended to guarantee your freedom to share and change free software -- to make sure the software is free for all its users. This General Public License applies to most of the Free Software Foundation's software and to any other program whose authors commit to using it. (Some other Free Software Foundation software is covered by the GNU Library General Public License instead.) You can apply it to your programs, too.

When we speak of free software, we are referring to freedom, not price. Our General Public Licenses are designed to make sure that you have the freedom to distribute copies of free software (and charge for this service if you wish), that you receive source code or can get it if you want it, that you can change the software or use pieces of it in new free programs; and that you know you can do these things.

To protect your rights, we need to make restrictions that forbid anyone to deny you these rights or to ask you to surrender the rights. These restrictions translate to certain responsibilities for you if you distribute copies of the software, or if you modify it. For example, if you distribute copies of such a program, whether gratis or for a fee, you must give the recipients all the rights that you have. You must make sure that they, too, receive or can get the source code. And you must show them these terms so they know their rights.

We protect your rights with two steps: (1) copyright the software, and (2) offer you this license which gives you legal permission to copy, distribute and/or modify the software.

Also, for each author's protection and ours, we want to make certain that everyone understands that there is no warranty for this free software. If the software is modified by someone else and passed on, we want its recipients to know that what they have is not the original, so that any problems introduced by others will not reflect on the original authors' reputations.

Finally, any free program is threatened constantly by software patents. We wish to avoid the danger that redistributors of a free program will individually obtain patent licenses, in effect making the program proprietary. To prevent this, we have made it clear that any patent must be licensed for everyone's free use or not licensed at all.

The precise terms and conditions for copying, distribution and modification follow.

## GNU GENERAL PUBLIC LICENSE TERMS AND CONDITIONS FOR COPYING, DISTRIBUTION AND MODIFICATION

0. This License applies to any program or other work which contains a notice placed by the copyright holder saying it may be distributed under the terms of this General Public License. The "Program", below, refers to any such program or work, and a "work based on the Program" means either the Program or any derivative work under copyright law: that is to say, a work containing the Program or a portion of it, either verbatim or with modifications and/or translated into another language. (Hereinafter, translation is included without limitation in the term "modification".) Each licensee is addressed as "you".

Activities other than copying, distribution and modification are not covered by this License; they are outside its scope. The act of running the Program is not restricted, and the output from the Program is covered only if its contents constitute a work based on the Program (independent of having been made by running the Program). Whether that is true depends on what the Program does.

1. You may copy and distribute verbatim copies of the Program's source code as you receive it, in any medium, provided that you conspicuously and appropriately publish on each copy an appropriate copyright notice and disclaimer of warranty; keep intact all the notices that refer to this License and to the absence of any warranty; and give any other recipients of the Program a copy of this License along with the Program.

You may charge a fee for the physical act of transferring a copy, and you may at your option offer warranty protection in exchange for a fee.

2. You may modify your copy or copies of the Program or any portion of it, thus forming a work based on the Program, and copy and distribute such modifications or work under the terms of Section 1 above, provided that you also meet all of these conditions:

- a) You must cause the modified files to carry prominent notices stating that you changed the files and the date of any change.
- b) You must cause any work that you distribute or publish, that in whole or in part contains or is derived from the Program or any part thereof, to be licensed as a whole at no charge to all third parties under the terms of this License.
- c) If the modified program normally reads commands interactively when run, you must cause it, when started running for such interactive use in the most ordinary way, to print or display an announcement including an appropriate copyright notice and a notice that there is no warranty (or else, saying that you provide a warranty) and that users may redistribute the program under these conditions, and telling the user how to view a copy of this License. (Exception: if the Program itself is interactive but does not normally print such an announcement, your work based on the Program is not required to print an announcement.)

These requirements apply to the modified work as a whole. If identifiable sections of that work are not derived from the Program, and can be reasonably considered independent and separate works in themselves, then this License, and its terms, do not apply to those sections when you distribute them as separate works. But when you distribute the same sections as part of a whole which is a work based on the Program, the distribution of the whole must be on the terms of this License, whose permissions for other licensees extend to the entire whole, and thus to each and every part regardless of who wrote it.

Thus, it is not the intent of this section to claim rights or contest your rights to work written entirely by you; rather, the intent is to exercise the right to control the distribution of derivative or collective works based on the Program.

In addition, mere aggregation of another work not based on the Program with the Program (or with a work based on the Program) on a volume of a storage or distribution medium does not bring the other work under the scope of this License.

3. You may copy and distribute the Program (or a work based on it, under Section 2) in object code or executable form under the terms of Sections 1 and 2 above provided that you also do one of the following:

- a) Accompany it with the complete corresponding machine-readable source code, which must be distributed under the terms of Sections 1 and 2 above on a medium customarily used for software interchange; or,
- b) Accompany it with a written offer, valid for at least three years, to give any third party, for a charge no more than your cost of physically performing source distribution, a complete machine-readable copy of the corresponding source code, to be distributed under the terms of Sections 1 and 2 above on a medium customarily used for software interchange; or,
- c) Accompany it with the information you received as to the offer to distribute corresponding source code. (This alternative is allowed only for noncommercial distribution and only if you received the program in object code or executable form with such an offer, in accord with Subsection b above.)

The source code for a work means the preferred form of the work for making modifications to it. For an executable work, complete source code means all the source code for all modules it contains, plus any associated interface definition files, plus the scripts used to control compilation and installation of the executable. However, as a special exception, the source code distributed need not include anything that is normally distributed (in either source or binary form) with the major components (compiler, kernel, and so on) of the operating system on which the executable runs, unless that component itself accompanies the executable.

If distribution of executable or object code is made by offering access to copy from a designated place, then offering equivalent access to copy the source code from the same place counts as distribution of the source code, even though third parties are not compelled to copy the source along with the object code.

4. You may not copy, modify, sublicense, or distribute the Program except as expressly provided under this License. Any attempt otherwise to copy, modify, sublicense or distribute the Program is void, and will automatically terminate your rights under this License. However, parties who have received copies, or rights, from you under this License will not have their licenses terminated so long as such parties remain in full compliance.

5. You are not required to accept this License, since you have not signed it. However, nothing else grants you permission to modify or distribute the Program or its derivative works. These actions are prohibited by law if you do not accept this License. Therefore, by modifying or distributing the Program (or any work based on the Program), you indicate your acceptance of this License to do so, and all its terms and conditions for copying, distributing or modifying the Program or works based on it.

6. Each time you redistribute the Program (or any work based on the Program), the recipient automatically receives a license from the original licensor to copy, distribute or modify the Program subject to these terms and conditions. You may not impose any further restrictions on the recipients' exercise of the rights granted herein. You are not responsible for enforcing compliance by third parties to this License.

7. If, as a consequence of a court judgment or allegation of patent infringement or for any other reason (not limited to patent issues), conditions are imposed on you (whether by court order, agreement or otherwise) that contradict the conditions of this License, they do not excuse you from the conditions of this License. If you cannot distribute so as to satisfy simultaneously your obligations under this License and any other pertinent obligations, then as a consequence you may not distribute the Program at all. For example, if a patent license would not permit royalty-free redistribution of the Program by all those who receive copies directly or indirectly through you, then the only way you could satisfy both it and this License would be to refrain entirely from distribution of the Program.

If any portion of this section is held invalid or unenforceable under any particular circumstance, the balance of the section is intended to apply and the section as a whole is intended to apply in other circumstances.

It is not the purpose of this section to induce you to infringe any patents or other property right claims or to contest validity of any such claims; this section has the sole purpose of protecting the integrity of the free software distribution system, which is implemented by public license practices. Many people have made generous contributions to the wide range of software distributed through that system in reliance on consistent application of that system; it is up to the author/donor to decide if he or she is willing to distribute software through any other system and a licensee cannot impose that choice.

This section is intended to make thoroughly clear what is believed to be a consequence of the rest of this License.

8. If the distribution and/or use of the Program is restricted in certain countries either by patents or by copyrighted interfaces, the original copyright holder who places the Program under this License may add an explicit geographical distribution limitation excluding those countries, so that distribution is permitted only in or among countries not thus excluded. In such case, this License incorporates the limitation as if written in the body of this License.

9. The Free Software Foundation may publish revised and/or new versions of the General Public License from time to time. Such new versions will be similar in spirit to the present version, but may differ in detail to address new problems or concerns.

Each version is given a distinguishing version number. If the Program specifies a version number of this License which applies to it and "any later version", you have the option of following the terms and conditions either of that version or of any later version published by the Free Software Foundation. If the Program does not specify a version number of this License, you may choose any version ever published by the Free Software Foundation.

10. If you wish to incorporate parts of the Program into other free programs whose distribution conditions are different, write to the author to ask for permission. For software which is copyrighted by the Free Software Foundation, write to the Free Software Foundation; we sometimes make exceptions for this. Our decision will be guided by the two goals of preserving the free status of all derivatives of our free software and of promoting the sharing and reuse of software generally.

#### NO WARRANTY

11. BECAUSE THE PROGRAM IS LICENSED FREE OF CHARGE, THERE IS NO WARRANTY FOR THE PROGRAM, TO THE EXTENT PERMITTED BY APPLICABLE LAW. EXCEPT WHEN OTHERWISE STATED IN WRITING THE COPYRIGHT HOLDERS

AND/OR OTHER PARTIES PROVIDE THE PROGRAM "AS IS" WITHOUT WARRANTY OF ANY KIND, EITHER EXPRESSED OR IMPLIED, INCLUDING, BUT NOT LIMITED TO, THE IMPLIED WARRANTIES OF MERCHANTABILITY AND FITNESS FOR A PARTICULAR PURPOSE. THE ENTIRE RISK AS TO THE QUALITY AND PERFORMANCE OF THE PROGRAM IS WITH YOU. SHOULD THE PROGRAM PROVE DEFECTIVE, YOU ASSUME THE COST OF ALL NECESSARY SERVICING, REPAIR OR CORRECTION.

12. IN NO EVENT UNLESS REQUIRED BY APPLICABLE LAW OR AGREED TO IN WRITING WILL ANY COPYRIGHT HOLDER, OR ANY OTHER PARTY WHO MAY MODIFY AND/OR REDISTRIBUTE THE PROGRAM AS PERMITTED ABOVE, BE LIABLE TO YOU FOR DAMAGES, INCLUDING ANY GENERAL, SPECIAL, INCIDENTAL OR CONSEQUENTIAL DAMAGES ARISING OUT OF THE USE OR INABILITY TO USE THE PROGRAM (INCLUDING BUT NOT LIMITED TO LOSS OF DATA OR DATA BEING RENDERED INACCURATE OR LOSSES SUSTAINED BY YOU OR THIRD PARTIES OR A FAILURE OF THE PROGRAM TO OPERATE WITH ANY OTHER PROGRAMS), EVEN IF SUCH HOLDER OR OTHER PARTY HAS BEEN ADVISED OF THE POSSIBILITY OF SUCH DAMAGES.

END OF TERMS AND CONDITIONS

## **2 Foreword**

Bunny version 2.2 brings a number of changes compared to earlier releases and corresponds to the LDE(X)6.4 / Core 2.2 release.

Bunny is a lightweight interface, requiring substantially less memory and disk space than either Ermintrude or Elf. Don't let the silly name put you off. Bunny is very capable.

## **3 Requirements**

**NOTE** : Additional requirements may be imposed by plugins, icons, schemes or 3<sup>rd</sup> party interfaces.

### **3.1 Hardware**

**300 MHz Pentium II processor**

**6 MB of free RAM** (more needed for additional plugins)

**1.4 MB of disk space** (more will be needed for additional schemes)

**800x600 display with 65K colours (16 bit)** (1024x768 or 1280x1024, 16M (24 bit) recommended, although any resolution can be used above or below these with some loss of usability / legibility within the environment)

**3 button mouse with scroll wheel** (2 button mice will lose some functionality)

**CD-ROM or DVD-ROM drive for media playback**

### **3.2 Software**

**LDE(X)6.4**

## 4 Welcome

Bunny is very simple to use and configure. It is a deliberately lightweight interface compared to both Elf and Ermintrude, but this comes with some loss of features :

- No drag and drop of files onto the shortcuts
- No taskbar
- No system tracker in the panel or as a floater
- No in-built desktop icons
- No multiple layers in the main launcher

You do get :

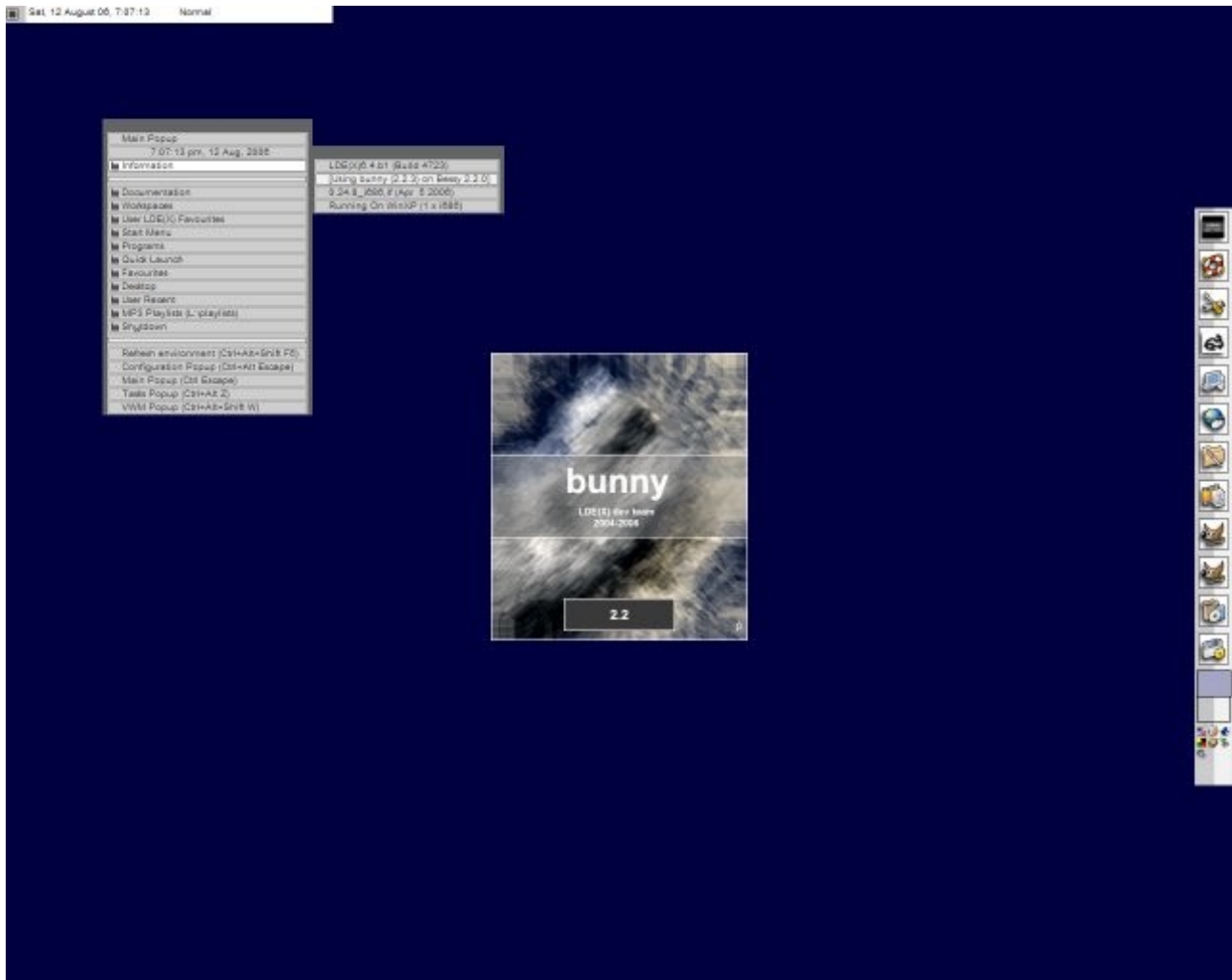
- Use of AEB-style popup menus for extended application selection
- Task-based application grouping
- 2 desktops with large previews
- Horizontal and vertical layouts with 3 selectable positions complete with optional memory.

Along with the usual features in LDE(X) interfaces :

- Support for the new global AEBs in LDE(X)6.3+ as well as the usual, local AEBs.
- Full support for local/global plugins
- Customisation of appearance through the scheme system
- Localisation support
- Full multiple user support
- Support for the full profile system in LDE(X)6.4.

## 5 Getting Started with Bunny

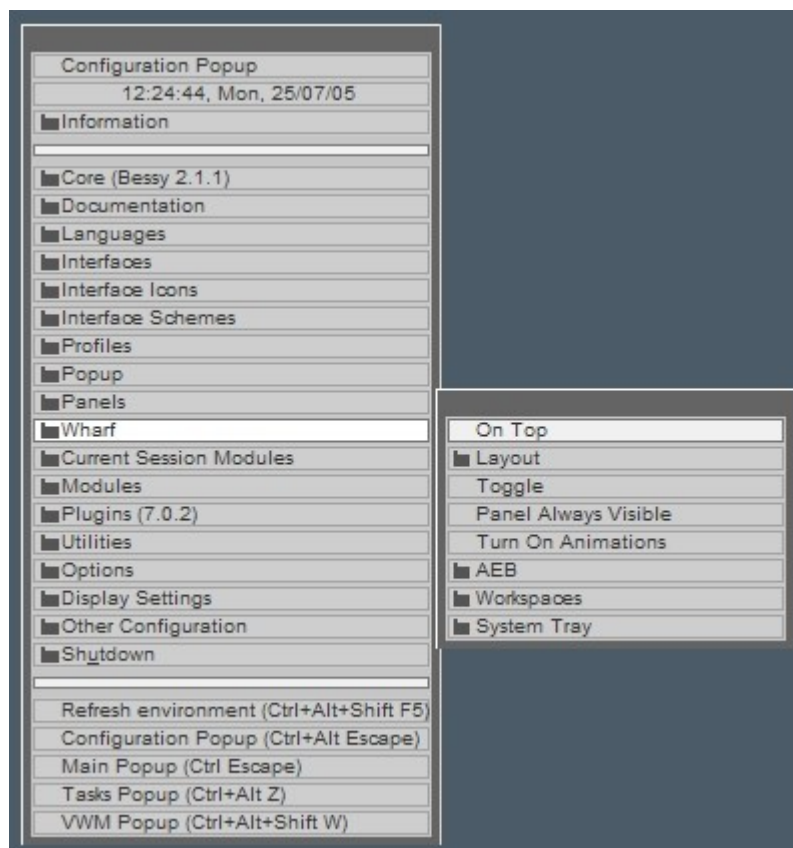
The interface is very simple to use and many options will be immediately obvious if you look them up within the Ermintrude manual. This manual will only cover the features and options that are unique to bunny.



The bunny 2.2 interface with vertical wharf on the righthand side (graphite scheme)

The wharf is a very simple affair. There are some menu options available to configure its behaviour, though, and we will cover them now.

The other images in this document are from an earlier version of bunny, but there are no interface-level changes in bunny 2.2 compared to 2.1, so the information is still correct.



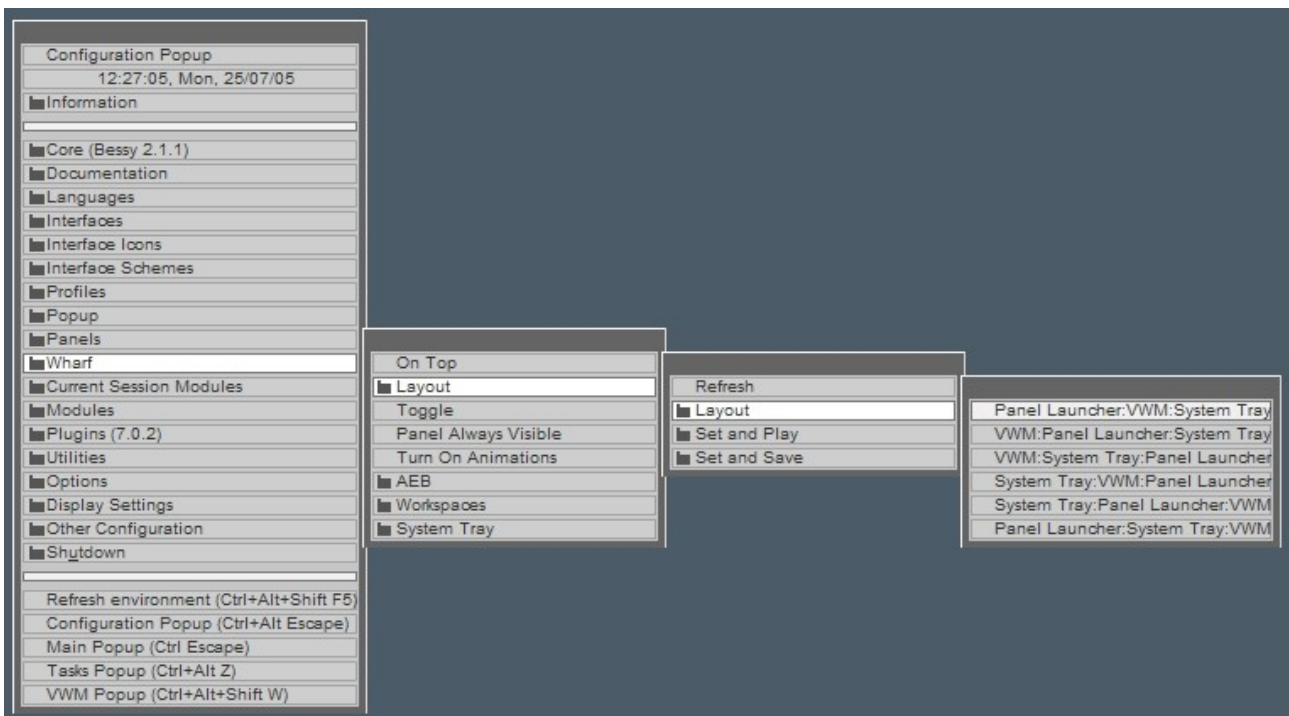
Top level wharf menu and location

**Not On top / On top** : self-explanatory

**Toggle** : Toggles wharf visibility on the screen (not saved across sessions)

**Panel Always Visible** : prevent maximised windows from covering the Wharf display

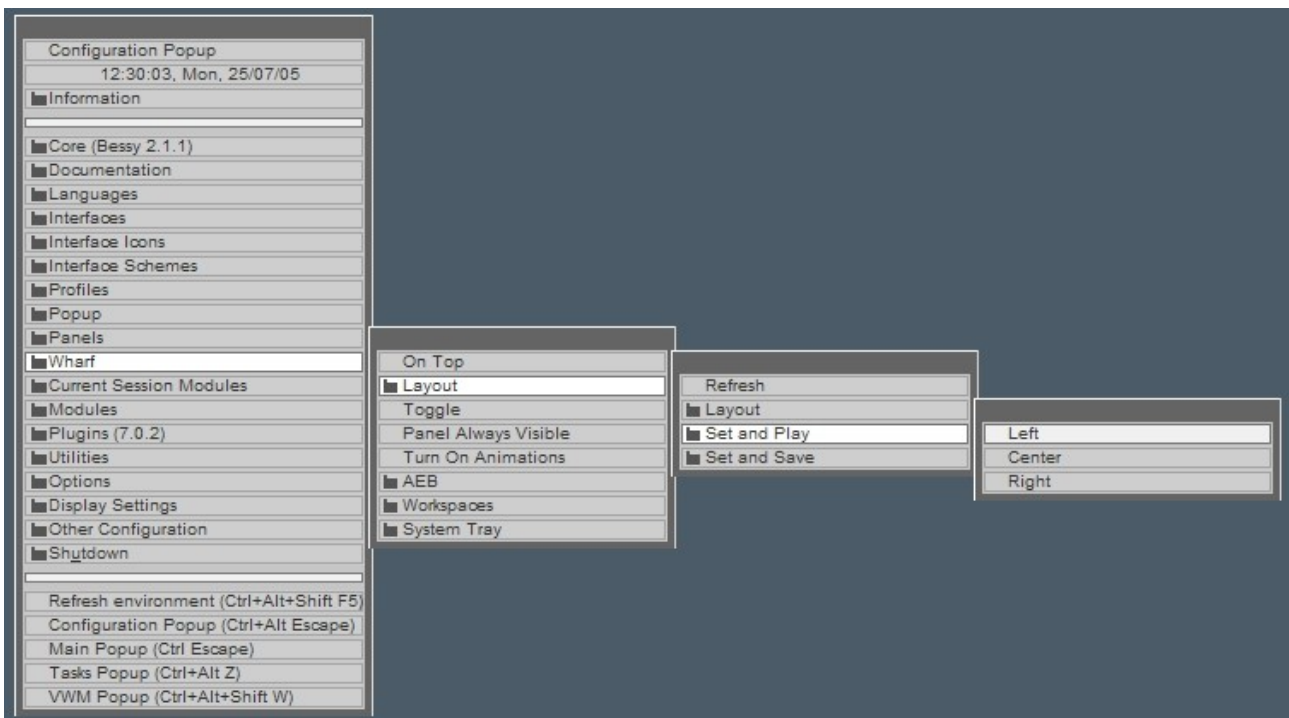
**Turn On/Off Animations** : self-explanatory



Choices for Wharf contents layout

This should be fairly self-explanatory. There are three regions in the wharf – the launcher, the workspace display and the system tray. The options here allow you to choose how they are ordered in the wharf, from left to right.

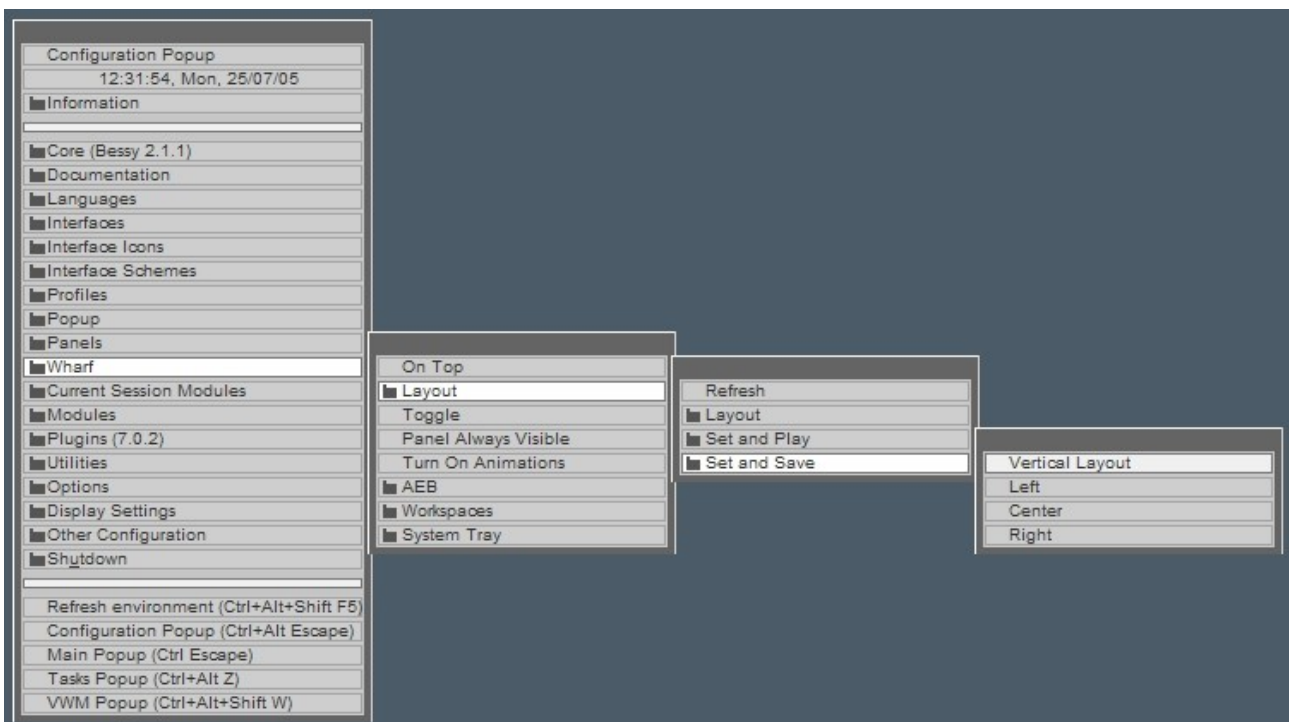
Note that bunny will need to restart for the choice to be shown on screen.



Set and play options for positioning the wharf (in this case, wharf is horizontal)

**Left / center / right** : self-explanatory (available for horizontal mode wharf)

**Top / center / bottom** : self-explanatory (available for vertical mode wharf)



Set and save options for positioning the wharf (in this case, the wharf is horizontal)

**Vertical / Horizontal Layout** : self-explanatory

**Left / center / right** : self-explanatory (available for horizontal mode wharf)

**Top / center / bottom** : self-explanatory (available for vertical mode wharf)

The other options (AEB / Workspaces / System Tray) are exactly the same as for Ermintrude so check the Ermintrude manual.

## **6 Technical Annex**

This material comprises the collected technical documentation for the bunny interface.

## 6.1 Schemes

The scheme system is designed to allow the look and feel of bunny to be altered. Except for the notes below, the scheme system is entirely the same as that in Ermintrude so please refer to the Ermintrude manual for more information.

### 6.1.1 Scheme Definitions

#### 6.1.1.1 The Structure

As noted above, there are differences in the structure of the bunny and Ermintrude scheme, as noted above. This is purely in terms of the image structure – all other parts of the scheme are as documented in the Ermintrude manual

#### **\$UI\$\Images\Schemes\graphite**

*graphite.rc*  
*graphite-integrate.rc*  
*syscolor2.ini*

#### **panel**

*back.png* (used for the horizontal wharf)  
*backv.png* (used for the vertical wharf)  
*popup.png*  
*systray.png* (used for the horizontal wharf)  
*systrayv.png* (used for the vertical wharf)  
*wharfvwm2.png* (used for the horizontal wharf)  
*wharfvwm2v.png* (used for the vertical wharf)

#### **popup**

*bottom.png*  
*bottom-inv.png* (optional)  
*normal.png*  
*normal-inv.png* (optional)  
*selected.png*  
*selected-inv.png* (optional)  
*selfolder.png*  
*selfolder-inv.png* (optional)  
*separator.png*  
*separator-inv.png* (optional)  
*title.png*  
*title-inv.png* (optional)

#### **plugins**

*xprop.png*

#### **ambience**

*panel.png*  
*smallpanel.png*

#### **sidebar2**

***backgrounds***

*155.png*

***gadgets***

*background.png*

## **7 FAQs**

## **8 Known Issues**

### ***8.1 Wharf jumps around screen on resolution changes***

There is no current 'fix' for this, but you can use the refresh gadget to reposition the wharf according to your current preferences.

### ***8.2 Missing icons in system tray***

The support component for this is fairly old and some icons are known to go missing from time to time. This is being researched with a view to providing an update in the near future.